

AOYIN METALS

AOYIN METALS

QUZHOU AOYIN METAL MATERIALS CO. LTD

Web: www.aymetals.com

Post code : 324000

Tel:+ 0570-386-9925

Fax: +0570-326-7809

Sales Manager Mob: +86-133-0570-9557

Email:info@aymetals.com export008@aymetals.com

Address: No.339 ,Kecheng district, Quzhou City, Zhejiang china.

衢州奥银金属材料有限公司

Quzhou Aoyin Metal Materials Co. Ltd



CONTENTS

- COMPANY PROFILE 01
- ALUMINUM SHEET /PLATE 02
- ALUMINUM COIL 03
- STAINLESS STEEL 04
- HOT DIPPED GALVANIZED STEEL 05
- PIPE FITTINGS 06
- PROJECT PURPOSE 07
- SERVICE PROCESS 08



Conference room





COMPANY PROFILE

Quzhou Aoyin metals Co.,Ltd is specialized in supply metal products which established in 2009 first started in domestic market .

We are a company specially in the design and supply metal for architectural project, storage tanks , gas line project etc, we have specialist cooperated resources if customer need the related product such as elbows ,fittings ,rock wool .

Our products widely exporting to Asia ,Europe , South America more than 20 countries . Our product used in domestic for Center of Sheng-zhen, China world Trade center tower , CCTV building , China qinghai gas pipe line .

Aoyin has a complete and scientific management system on product quality control enforce the ISO9001-2000 standard ,CE ,EN certificate . We have professional team for exporting and after sales service. We are keen to establish well and long term-business relationship with your esteemed company.and long term-business relationship with your esteemed company.

Company Experience

Established 2009

Project area : Europe ,middle east ,Asia ,Australia

Capacity : Product , solution , good sales service

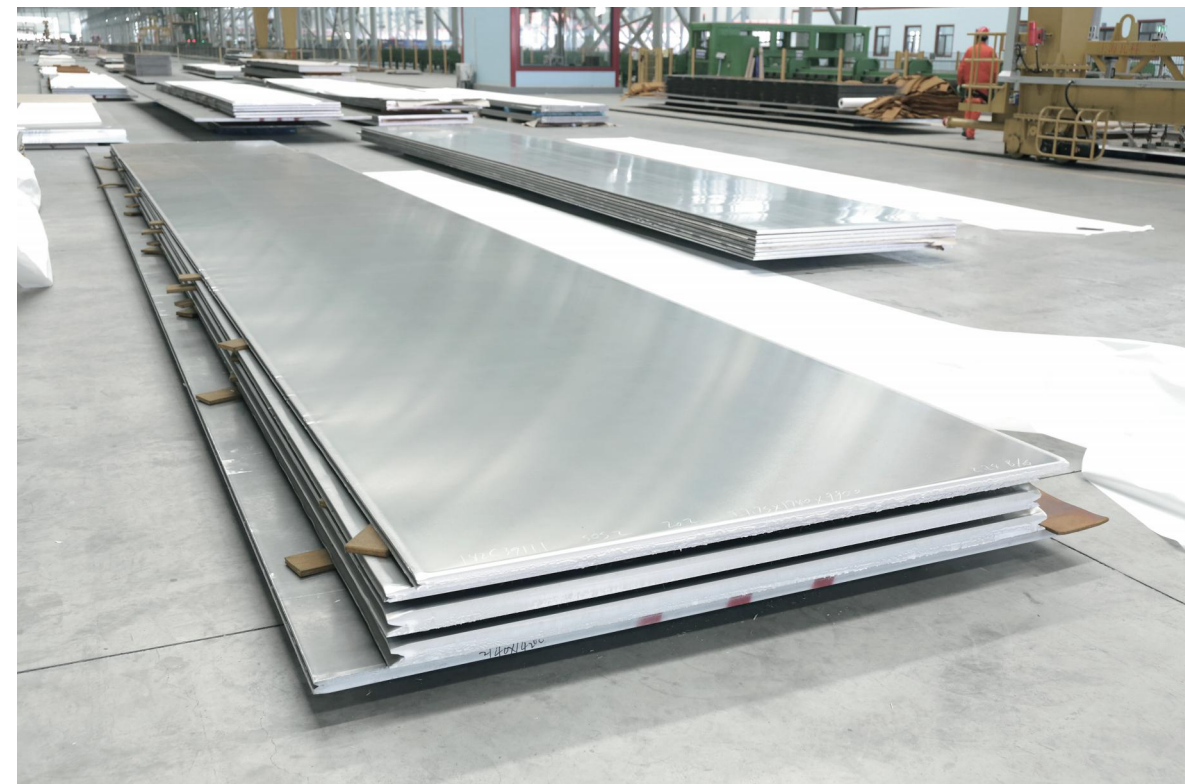
Factory Area 4000m²

We have strong technical team and export team

ALUMINUM SHEET /PLATE



Product	Alloy	Temper	Thickness (mm)	Width (mm)	Length (mm)	Application
Aluminum Sheet	1050/1060/1070/1100	O/H14 H16/H24/H26/ H32/H34/H111 /H112/T6/T651	0.2-100	200-2650	Below 12000	Construc- tion,machinery ,boat construc- tion ,packing etc
	3003/3004/3105					
	5005/5052/5083					
	6061 /6063					



ALUMINUM COIL



Product	Alloy	Temper	Thickness (mm)	Width (mm)	I.D(mm)v	Application
Aluminum Sheet	1050/1060/1070/1100	O/H14	0.2-0.6	200-2650	75,150,505,610	Construction, machinery, boat construction, packing etc
	3003/3004/3105	H16/H24/H26/H32/H34/H111				
	5005/5052/5083	/H112/T6/T651				

STAINLESS STEEL



Commodity	Hot and cold rolled stainless steel coil&sheet&pipe&strip
Grade	201,202,301,304,304j1,304l,316,316L
Standard	ISO,JIS,ASTM,AS EN,GB
surface	2B,BA,HL,NO.4,NO.1
Thickness	Cold rolling : 0.3-6.0mm, Hot rolling :3--10mm
Width	100-2000mm

HOT DIPPED GALVANIZED STEEL

Commodity	EN10147/EN10142/DIN 17162/JIS G3302/ASTM A653
Grade	Dx51D/Dx52D/Dx53D/DX-54D/S220GD/S250GD/S280GD/S350GD/S350GD/S550GD; SGCC/SGHC, SGCH, SGH340, SGH400, SGH440, SGH490, SGH540, SGCD1, S-GCD2, SGCD3, SGC340, SGC400, SGC440, SGC490, SGC570; SQ CR22(230), SQ CR22(255), SQ CR40(275), SQ CR50(340), SQ CR80(550), CQ, FS, DDS, EDDS, SQ CR33(230), SQ CR37(255), SQ CR40(275), SQ CR50(340), SQ CR80(550); or as Requirement
Thickness	0.3-1.2.00mm, or customer's requirement
Width	600mm-1500mm, according to customer's requirement
Zinc Coating	40-275g/m ²
Surface Treatment	Chromated/Non-Chromated, Oiled/Non-oiled, Skin pass
Surface Structure	Normal spangle coating(NS), minimized spangle coating(MS), spangle-free(FS)
Hardness	Soft hard(HRB60), medium hard(HRB60-85), full hard(HRB85-95)
ID	508mm/610mm
Material End use	For tube making, outside material (roof, wall material) industrial, commercial, residential

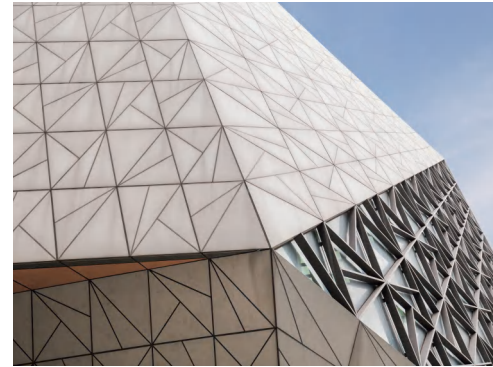


PIPE FITTINGS

Types	Carbon steel Pipe elbow, tee, reducer, cap, bend, stub end
Size	1/2"-24" seamless, 26"-110" welded
Standard	ANSI B16.9, EN10253-2, DIN2605, DIN2616, DIN2615, GOST17375-2001, JIS B2313, MSS SP 75, etc.
Wall thickness	STD, XS, XXS, SCH20, SCH30, SCH40, SCH60, SCH80, SCH160, XXS and etc.
Elbow Degree	30° 45° 60° 90° 180°, etc
Radius of elbow	LR/long radius/R=1.5D, SR/Short radius/R=1D, Various radius: 2.5D, 3D, 5D, 10D, 20D etc.
Type of tee	equal tee, reduced tee; Split tee, later tee, barred tee
Type of reducer	Concentric and Eccentric
End	Bevel end/BE/buttweld
Surface	Nature color, varnished, black painting, anti-rust oil etc.
Material	Carbon steel: A234WPB, A420WPL6 St37, St45, E24, A42CP, 16Mn, Q345, P245GH, P235GH, P265GH, P280GH, P295GH, P355GH etc.
	Pipeline steel: WPHY42, WPHY52, WPHY60, WPHY65, WPHY70, WPHY80 and etc.
	Stainless Steel, Cr-Mo alloy steel: P11, P22, P5, P9, P91, 10CrMo9-10, 16Mo3 etc.



PROJECT PURPOSE



SERVICE PROCESS

